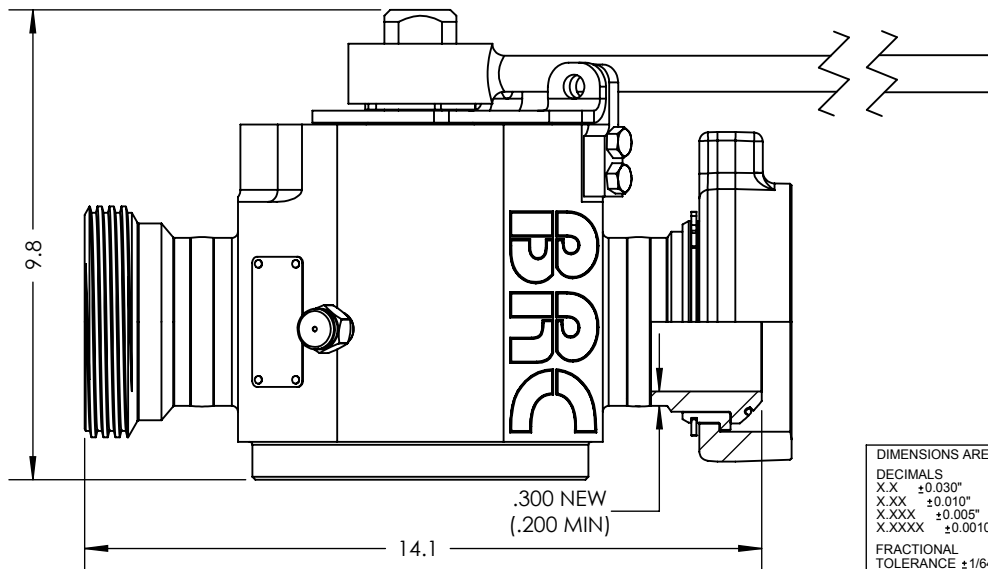
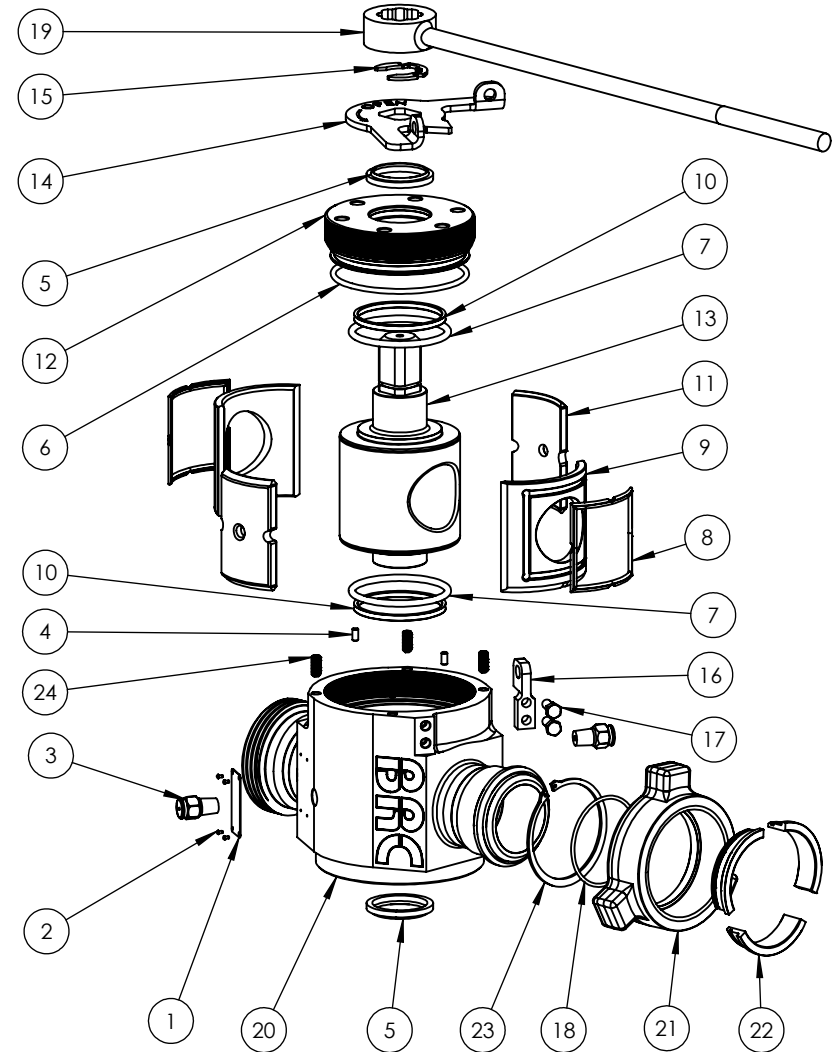


THE INFORMATION CONTAINED IN THIS DRAWING IS THE SOLE PROPERTY OF BRC ENGINEERING. ANY REPRODUCTION IN WHOLE OR PART WITHOUT THE WRITTEN PERMISSION OF BRC ENGINEERING IS PROHIBITED.

ITEM	PART NUMBER	DESCRIPTION	Assy Qty	Major Kit Qty 100-06-00R	Minor Kit Qty 100-06-00S
1	100-03-031	Fitting Identification Tag	1	-	-
2	100-00-017	No. 2-100 x 0.1875in U-Drive Screw	4	-	-
3	100-00-055	Giant Button-Head Grease Fitting - 0.375in NPT	2	2	-
4	100-00-059	1/4" x 1/2" Dowel Pin	2	2	-
5	100-00-060	Shaft Wiper U-Type 2.25in	2	2	2
6	100-00-062	O-Ring -356	1	1	1
7	100-00-064	O-Ring -419	2	2	2
8	100-04-014	3" Fig 1502 Plug Valve Seat Window Seal	2	2	2
9	100-04-015	3" Fig 1502 Plug Valve Window Seat	2	2	-
10	100-04-017	3" Plug Valve Radial Backup Ring	2	2	2
11	100-04-019	3" Fig 1502 Seat Spacer	2	2	-
12	100-06-002	3" Fig 206 Plug Valve Top Nut	1	-	-
13	100-06-003	3in Fig 206 Plug	1	1	-
14	100-06-004	3" Fig 206 Plug Valve Indicator	1	-	-
15	100-00-091	1.75" Ext. Ret. Ring, Style 2	1	-	-
16	100-06-009	3" Fig 206 Plug Valve Lockout Tab	1	-	-
17	100-00-092	0.375-16 x 1.0in - Hex Bolt	2	-	-
18	100-00-069	-237 O-Ring	1	1	1
19	100-06-008	3" Fig 206 Plug Valve Stem Wrench	1	-	-
20	100-06-001	3" Fig 206 BW Plug Valve Body - Billet	1	-	-
21	100-06-206W-B	3 Inch Fig 206 Union Nut	1	-	-
22	100-06-005	3" Fig 206 Segmented Slip	3	-	-
23	100-00-093	4-1/4" External Retaining Ring	1	-	-
24	100-00-105	SHSS 0.375-16 x 0.875in	4	-	-

NOTES:

- 1) MEETS REQUIREMENTS OF API6A PSL1/PR1
- 2) 2,000 PSI MAX CWP
- 2) TEMPERATURE CLASS LU (-46°C[-50°F] TO 121°C[250°F])
- 3) MATERIAL CLASS DD (SOUR SERVICE)
- 4) 48 kg [105 lb] ASSEMBLED WEIGHT



DIMENSIONS ARE IN INCHES, ANGLES ARE IN DEGREES

DECIMALS
 X.X ±0.030"
 X.XX ±0.010"
 X.XXX ±0.005"
 X.XXXX ±0.0010"

FRACTIONAL TOLERANCE ±1/64"

SURFACE FINISH √ 63µin.
 UNSPECIFIED CHAMFERS & FILLET RADII = 0.010"

REMOVE ALL BURRS AND SHARP EDGES

APPROVAL

↗ = ±0.001" / IN.
 ⊥ = ±0.001" / IN.
 ○ = ±0.001" / IN. Ø
 ⊙ = ±0.001"

BRC ENGINEERING		BRC Engineering	
MATERIAL		Refer to part drawings	
WEIGHT 48 kg (105 lbs)	DWG. NO. 100-06-011	REV 0	SHEET 1 of 1

REV	DESCRIPTION	DATE	BY
0	INITIAL RELEASE.	2017-03-08	SB